

# CAPABILITY STATEMENT

*Committed to Quality. Committed to You.*

1365 N. McCan St. Anaheim CA 92806  
www.magsensors.com



Cage: 0LVP6 | Duns:104047907 | ITAR:M23643  
SAM Registered: YES  
DGS Registered: 2005212 (Small Business)



## Business Summary

Magnetic Sensors Corporation is a small business certified company that has been designing and manufacturing Hall Effect and Variable Reluctance technologies, since 1983. We provide a wide range of solutions for applications requiring measurement of speed, direction, and proximity for industrial, marine, military, aerospace, rail and MSC continues to assist in finding solutions to the ever changing technology. We are proud of our 39 year heritage of product development and evolution.



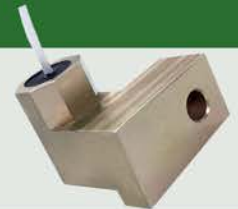
## WHAT WE DO BEST



Design Magnetic Sensors / Custom Coil Assemblies



Build and Manufacture Customised Speed Sensors



## Differentiators

- ✓ Communicative and responsive supplier
- ✓ Production efficiency guarantees customers a quick turn around time from concept plans to finish
- ✓ In-house engineering who are experts in their respective fields combined with highly skilled certified workers
- ✓ Proven track record on customer service and on-time deliveries

## Active Customers



## Expertise

- Max Amhirkhizi PhD, VP Finance & Operations**
- Graduated BS Mechanical Eng. & Engineering Technology at California State University, Sacramento
  - PhD Technology and International Relations, University of Denver
  - 35-plus years experience in management and project delivery
- Don Payne, Senior Technical Advisor**
- US Navy Veteran
  - BS Electrical Engineering, Washington University
  - 35 years as MSC's VP of Engineering
  - Served as an expert in the subject of magnetics in federal court cases
  - Obtained fourteen patents for instrumentation techniques in the fields of medical, aerospace, automotive, & industrial process control



Photo of our Founder and President Charlie visiting our customer in one of the PowerGen Show in Florida.

**Charles Boudakian, Founder and President**

- US Navy Veteran
- Graduated BS Industrial Engineering, Columbia University NY
- Active major shareholder
- 50-plus years experience in general and engineering management

**Ameen Shahini, Chief Engineer - Technical Department**

- BS Electrical Engineering, Southern Illinois University, Carbonadale IL.
- 25-plus years experience
- Designed and development sensors and harnesses
- Tested and calibrated diesel-engine locomotives
- Served as quality assurance in manufacturing

## Applications

- Turbochargers
- Engine-powered compressors
- Jet engines
- Diesel Engines
- Transmissions
- Flywheel speed sensor
- Brake control
- Steering mirror actuators
- Hot axel box detector
- Dynamometers
- Traction control
- Valve Actuators
- Ignition Timing
- Engine-powered generators



**1 MILITARY**

Over 20+ years supplying sensors for Bradley Tank transmission

**2 LOCOMOTIVE**

Demonstrated millions of hours of MTBF for Cam & Crank sensors on Diesel Engines & Locomotives

**3 POWERGEN**

15+ yrs experience supplying sensors for Portable, Natural Gas, Gasoline, Diesel, Steam Generators, Wind Turbines